

SHEERWEAVE® Performance+

Metallized Fabric

STYLE 2500+ / 2410+ / 2390+



COMPLETE TECHNICAL DATA

SheerWeave Performance + takes the performance of a traditional SheerWeave fabric “plus” the highly reflective properties of metallization and combines them to achieve the ultimate in sun control protection.

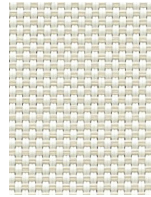
Available in all 10 Style 2390 colors, SheerWeave Performance+ is currently offered in 5% open (Style 2390+), 3% open (Style 2410+) and 1% open (Style 2500+).

Benefits of Performance + include:

- Significant reduction of Solar Heat Gain in all colors
- Improved glare reduction in light colors
- Improved thermal performance
- Improved outward visibility in light colors



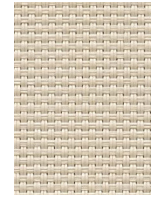
P12 Oyster



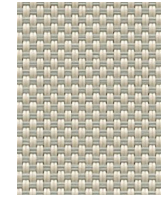
P13 Oyster/Beige



P14 Oyster/Pearl Gray



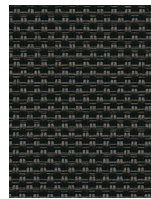
Q20 Beige



Q21 Beige/Pearl Gray



V20 Pearl Gray



V21 Charcoal



V22 Charcoal/Gray



V24 Charcoal/Chestnut



V32 Charcoal/Alpaca

SPECIFICATIONS

FIRE CLASSIFICATION

CAN/CGSB2-4.162-M80
 NFPA 101 (Class A Rating)
 NFPA 701 TM#1 (small scale)
 NFPA 701 TM#2 (large scale)
 California U.S. Title 19 (small scale)
 BS 5867 Part 2 Type B Performance
 IBC Section 803.1.1 (Class A Rating)
 CAN/ULC-S 109 (large and small scale)

Fire classifications are subject to change. Please go to phifer.com for the most current information.

BACTERIA AND FUNGAL RESISTANCE

ASTM E 2180 ASTM G21 ASTM G22 AATCC30 Part 3 ASTM D 3273
 GREENGUARD Mold and Bacteria Standard ASTM 6329
 Includes Microban antimicrobial additives

ENVIRONMENTAL CERTIFICATION

GREENGUARD GREENGUARD Gold
 Certified to these standards for low chemical emissions into indoor air during product usage

SAFE USE

RoHS/Directive 2002/95/EC REACH (EC 1907/2006) compliant
 ANSI/WCMA A 100.1-2007 for lead content US Consumer Product Safety Commission Section 101

STANDARD USES

Roll-up shades, Roman shades, vertical blinds, panel tracks and screens

WARRANTY

5-year interior

ACOUSTICAL PERFORMANCE

NRC (Noise Reduction Coefficient) and SAA (Sound Absorption Average) tested in accordance with ASTM C423-09a

UV PROTECTION

Seal of Approval by the Melanoma International Foundation (MIF) for effectiveness in preventing sun damage to the skin or eyes

TRACKLESS

TrackLess Technology minimizes the fiberglass yarns' inherent tendencies to track when being rolled up in a shade. With TrackLess Technology these same fabrics now track less, roll up straighter and reduce shade fabrication time.

HANDLING AND CLEANING INSTRUCTIONS

The metallized coating is fragile and must be handled with the utmost care to avoid damage. Attention must be given during all phases of fabrication and installation to protect the metallized coating. Do not scrub. Do not use tape, solvents or abrasive cleaners which could damage the fabric coating. Clean with a soft, damp cloth. For additional handling recommendations, please contact the Sun Control Dept.



STYLE	2500+	2410+	2390+
WIDTHS	63" and 96" 160 cm and 243.8 cm	63" and 96" 160 cm and 243.8 cm	63" and 96" 160 cm and 243.8 cm
ROLL LENGTH	30 Linear Yards 27.4 Linear Meters	30 Linear Yards 27.4 Linear Meters	30 Linear Yards 27.4 Linear Meters
COMPOSITION	36% Fiberglass 62% Vinyl on Fiberglass 2% Aluminum Coating	34% Fiberglass 64% Vinyl on Fiberglass 2% Aluminum Coating	34% Fiberglass 64% Vinyl on Fiberglass 2% Aluminum Coating
MESH WEIGHT	16.39 oz/yd ² 555.72 g/m ²	14.1 oz/yd ² 478 g/m ²	11.8 oz/yd ² 379 g/m ²
FABRIC THICKNESS	0.024 in 0.61 mm	0.019 in 0.48 mm	0.018 in 0.46 mm
OPENNESS FACTOR	Approximately 1%	Approximately 3%	Approximately 5%
UV BLOCKAGE	Approximately 99%	Approximately 97%	Approximately 95%
ACOUSTICAL VALUE	NRC .50 / SAA .49	NRC .25 / SAA .23	NRC .15 / SAA .14

SOLAR HEAT CONTROL PROPERTIES

STYLE 2500+ FABRIC	Solar Transmittance	Solar Reflection Out	Light Transmittance	Light Reflection	% Open	UV Transmittance	Color Rendering Index
Glazing Performance	n/a	n/a	n/a	n/a	n/a	n/a	n/a
P12 Oyster	3	74	3	73	1	2	98
P13 Oyster/Beige	3	74	3	73	1	2	95
P14 Oyster/Pearl Gray	3	74	3	73	1	2	98
Q20 Beige	3	74	3	73	1	2	95
Q21 Beige/Pearl Gray	3	73	2	72	1	2	96
V20 Pearl Gray	2	75	2	74	1	2	98
V21 Charcoal	2	72	2	71	1	2	99
V22 Charcoal/Gray	2	73	2	72	1	2	100
V24 Charcoal/Chestnut	2	73	2	72	1	2	100
V32 Charcoal/Alpaca	2	75	2	74	1	2	98

STYLE 2410+ FABRIC	Solar Transmittance	Solar Reflection Out	Light Transmittance	Light Reflection	% Open	UV Transmittance	Color Rendering Index
Glazing Performance	n/a	n/a	n/a	n/a	n/a	n/a	n/a
P12 Oyster	5	73	5	72	3	3	99
P13 Oyster/Beige	5	73	5	72	3	4	99
P14 Oyster/Pearl Gray	4	73	4	72	3	4	99
Q20 Beige	5	73	5	72	3	4	98
Q21 Beige/Pearl Gray	5	72	5	71	3	4	99
V20 Pearl Gray	4	75	4	74	3	4	99
V21 Charcoal	4	71	4	70	3	4	100
V22 Charcoal/Gray	4	72	4	71	3	4	100
V24 Charcoal/Chestnut	4	72	4	71	3	4	100
V32 Charcoal/Alpaca	4	75	4	74	3	4	99

STYLE 2390+ FABRIC	Solar Transmittance	Solar Reflection Out	Light Transmittance	Light Reflection	% Open	UV Transmittance	Color Rendering Index
Glazing Performance	n/a	n/a	n/a	n/a	n/a	n/a	n/a
P12 Oyster	8	71	8	70	5	7	99
P13 Oyster/Beige	8	72	8	71	5	6	99
P14 Oyster/Pearl Gray	7	71	7	70	5	6	100
Q20 Beige	8	72	8	71	5	7	98
Q21 Beige/Pearl Gray	7	71	7	70	5	6	99
V20 Pearl Gray	7	74	7	73	5	6	99
V21 Charcoal	8	71	8	70	5	7	100
V22 Charcoal/Gray	8	71	8	70	5	7	100
V24 Charcoal/Chestnut	8	71	8	70	5	7	100
V32 Charcoal/Alpaca	8	74	8	73	5	7	100

SOLAR HEAT CONTROL PROPERTIES - STYLE 2500+

	High Performance Glass				Low-E Glass				6mm Double Clear Glass			
	Light Trans	g-Value/SHGC	SC	U-Value in W/m2K	Light Trans	g-Value/SHGC	SC	U-Value in W/m2K	Light Trans	g-Value/SHGC	SC	U-Value in W/m2K
Glazing Performance	69	39	45	1.1	74	70	80	1.4	79	74	85	2.8
P12 Oyster	2	15	18	0.8	2	30	35	1.0	2	25	29	1.6
P13 Oyster/Beige	2	16	18	0.8	2	25	29	0.9	2	25	29	1.6
P14 Oyster/Pearl Gray	2	16	19	0.8	2	26	30	1.0	2	25	28	1.6
Q20 Beige	2	16	19	0.8	2	26	30	1.0	2	26	30	1.6
Q21 Beige/Pearl Gray	2	16	18	0.8	2	25	29	1.0	2	25	29	1.6
V20 Pearl Gray	2	15	18	0.8	1	24	28	1.0	2	24	28	1.5
V21 Charcoal	1	17	19	0.8	1	27	31	1.0	1	27	31	1.6
V22 Charcoal/Gray	1	16	18	0.8	1	25	29	1.0	1	25	29	1.6
V24 Charcoal/Chestnut	1	16	19	0.8	1	26	30	1.0	1	26	29	1.6
V32 Charcoal/Alpaca	2	15	18	0.8	1	24	28	1.0	2	24	28	1.6

	6mm Single Bronze Glass				6mm Single Clear Glass				3mm Single Clear Glass			
	Light Trans	g-Value/SHGC	SC	U-Value in W/m2K	Light Trans	g-Value/SHGC	SC	U-Value in W/m2K	Light Trans	g-Value/SHGC	SC	U-Value in W/m2K
Glazing Performance	49	58	67	5.7	88	84	96	5.7	90	87	100	5.8
P12 Oyster	1	19	22	2.5	3	22	25	2.5	3	21	25	2.5
P13 Oyster/Beige	1	20	23	2.5	2	22	25	2.5	2	22	25	2.5
P14 Oyster/Pearl Gray	1	20	22	2.4	2	22	25	2.4	2	22	25	2.5
Q20 Beige	1	20	23	2.5	2	22	26	2.5	2	22	26	2.5
Q21 Beige/Pearl Gray	1	20	22	2.5	2	22	25	2.5	2	21	25	2.5
V20 Pearl Gray	1	19	22	2.4	2	21	24	2.4	2	20	23	2.5
V21 Charcoal	1	21	24	2.5	1	23	27	2.5	1	23	27	2.5
V22 Charcoal/Gray	1	20	21	2.5	1	22	25	2.5	1	22	25	2.5
V24 Charcoal/Chestnut	1	20	23	2.5	1	22	25	2.5	1	22	25	2.5
V32 Charcoal/Alpaca	1	19	22	2.4	2	21	24	2.4	2	20	23	2.5

SOLAR HEAT CONTROL PROPERTIES - STYLE 2410+

	High Performance Glass				Low-E Glass				6mm Double Clear Glass			
	Light Trans	g-Value/SHGC	SC	U-Value in W/m2K	Light Trans	g-Value/SHGC	SC	U-Value in W/m2K	Light Trans	g-Value/SHGC	SC	U-Value in W/m2K
Glazing Performance	69	39	45	1.1	74	70	80	1.4	79	74	85	2.8
P12 Oyster	3	15	17	0.8	4	29	33	1.0	4	24	27	1.6
P13 Oyster/Beige	4	15	17	0.8	4	29	34	1.0	5	24	26	1.6
P14 Oyster/Pearl Gray	3	15	17	0.8	3	29	33	1.0	4	24	27	1.6
Q20 Beige	4	15	17	0.8	4	30	34	1.0	5	24	28	1.6
Q21 Beige/Pearl Gray	4	14	17	0.8	4	30	35	1.0	5	24	28	1.6
V20 Pearl Gray	3	14	16	0.8	3	28	32	0.9	3	23	26	1.5
V21 Charcoal	3	15	18	0.8	3	30	34	1.0	4	25	28	1.6
V22 Charcoal/Gray	3	15	17	0.8	3	29	34	1.0	4	24	28	1.6
V24 Charcoal/Chestnut	3	15	17	0.8	3	30	34	1.0	4	24	28	1.6
V32 Charcoal/Alpaca	3	15	17	0.8	3	24	27	1.0	4	23	27	1.6

	6mm Single Bronze Glass				6mm Single Clear Glass				3mm Single Clear Glass			
	Light Trans	g-Value/SHGC	SC	U-Value in W/m2K	Light Trans	g-Value/SHGC	SC	U-Value in W/m2K	Light Trans	g-Value/SHGC	SC	U-Value in W/m2K
Glazing Performance	49	58	67	5.7	88	84	96	5.7	90	87	100	5.8
P12 Oyster	2	19	22	2.4	4	21	23	2.4	4	20	24	2.4
P13 Oyster/Beige	2	19	22	2.4	5	21	24	2.4	5	21	24	2.4
P14 Oyster/Pearl Gray	2	19	22	2.4	4	20	24	2.4	4	20	23	2.4
Q20 Beige	2	19	22	2.5	5	21	24	2.5	5	21	24	2.5
Q21 Beige/Pearl Gray	3	20	23	2.5	5	22	25	2.5	5	22	25	2.5
V20 Pearl Gray	2	18	21	2.4	4	20	23	2.4	4	19	22	2.4
V21 Charcoal	2	19	22	2.4	4	21	25	2.4	4	21	25	2.5
V22 Charcoal/Gray	2	19	22	2.4	4	21	24	2.4	4	21	24	2.4
V24 Charcoal/Chestnut	2	19	22	2.4	4	21	25	2.4	4	21	24	2.4
V32 Charcoal/Alpaca	2	19	22	2.4	4	21	25	2.4	4	21	24	2.4

SOLAR HEAT CONTROL PROPERTIES - STYLE 2390+

	High Performance Glass				Low-E Glass				6mm Double Clear Glass			
	Light Trans	g-Value/SHGC	SC	U-Value in W/m2K	Light Trans	g-Value/SHGC	SC	U-Value in W/m2K	Light Trans	g-Value/SHGC	SC	U-Value in W/m2K
Glazing Performance	69	39	45	1.1	74	70	80	1.4	79	74	85	2.8
P12 Oyster	6	15	18	0.8	7	30	35	1.0	7	24	28	2.5
P13 Oyster/Beige	6	15	17	0.8	6	30	34	1.0	7	24	28	1.6
P14 Oyster/Pearl Gray	5	15	18	0.8	6	30	35	1.0	6	25	29	1.6
Q20 Beige	6	15	18	0.8	6	30	35	1.0	7	25	29	1.6
Q21 Beige/Pearl Gray	5	15	18	0.8	6	30	35	1.0	6	25	29	1.6
V20 Pearl Gray	5	15	17	0.8	5	29	33	0.9	6	24	27	1.5
V21 Charcoal	6	16	18	0.8	6	31	35	1.0	7	25	29	1.6
V22 Charcoal/Gray	6	16	18	0.8	6	30	35	1.0	7	25	29	1.6
V24 Charcoal/Chestnut	6	16	18	0.8	6	30	35	1.0	7	25	29	1.6
V32 Charcoal/Alpaca	6	15	17	0.8	6	24	28	1.0	7	24	28	1.6

	6mm Single Bronze Glass				6mm Single Clear Glass				3mm Single Clear Glass			
	Light Trans	g-Value/SHGC	SC	U-Value in W/m2K	Light Trans	g-Value/SHGC	SC	U-Value in W/m2K	Light Trans	g-Value/SHGC	SC	U-Value in W/m2K
Glazing Performance	49	58	67	5.7	88	84	96	5.7	90	87	100	5.8
P12 Oyster	4	20	23	2.5	8	22	26	2.5	8	22	26	2.5
P13 Oyster/Beige	4	19	22	2.4	7	22	25	2.4	7	22	25	2.5
P14 Oyster/Pearl Gray	3	20	23	2.5	7	22	26	2.5	7	22	26	2.5
Q20 Beige	4	20	23	2.5	7	22	25	2.5	7	22	25	2.5
Q21 Beige/Pearl Gray	4	20	23	2.6	7	22	26	2.6	7	22	25	2.6
V20 Pearl Gray	3	19	22	2.4	6	21	24	2.4	6	21	24	2.4
V21 Charcoal	4	20	23	2.5	7	23	26	2.5	7	23	26	2.5
V22 Charcoal/Gray	4	20	23	2.4	7	23	26	2.4	7	22	26	2.5
V24 Charcoal/Chestnut	4	20	23	2.5	7	23	26	2.5	8	23	26	2.5
V32 Charcoal/Alpaca	4	20	23	2.5	7	21	24	2.5	7	21	24	2.6

DEFINITIONS

Light Trans (Light Transmittance): Includes light that comes through the openings and light that is reflected inward off the yarn.

Light Ref (Light Reflection): Represents light that is returned to the outside by the fabric.

Solar Trans (Solar Transmittance): The total solar energy that passes through the fabric.

Solar Ref Out (Solar Reflection Out): Represents the percent of all wave lengths of electromagnetic energy that are reflected out.

g-Value/SHGC: European equivalent for Solar Heat Gain Coefficient (SHGC). A rating that expresses the percentage of incident solar heat transmitted through a fenestration system. The solar heat gain coefficient is replacing the shading coefficient as the standard indicator of a window's shading ability. The lower the solar heat gain coefficient number, the less solar heat it transmits and the greater its shading ability.

UV Trans (UV Transmittance): Percent of Ultra Violet light transmitted through the fabric.

Color Rend Index (Color Rendering Index): A measurement of the fabrics effect on color on a scale of 1 to 100 where 100 represents no color distortion.

U-Value in W/m2K: Represents heat transmission in watts per square meter. This value does not represent US U-Values.

SC (Shading Coefficient): Percentage of solar heat gain transmitted to the interior through the glass and shading system.

REFERENCES

1. European standard EN 410: 1998 (E), Glass in building - Determination of luminous and solar characteristics of glazing, European Committee for Standardization, April 1998.
2. European standard EN 12898:2001 (E), Glass in building - Determination of the emissivity, European Committee for Standardization, January 2001.
3. SO 15099:2003 (E), Thermal performance of windows, doors and shading devices - Detailed calculations.
4. European standard EN 673:1997 (E), Glass in building - Determination of thermal transmittance (U-value) - Calculation method, European Committee for Standardization, October, 1997.

Tested by TÜV Rheinland® Quality / TNO Quality.

PHIFER

INCORPORATED

P. O. Box 1700 • Tuscaloosa, Alabama 35403-1700 USA
 Phone: 205.345.2120 • FAX: 205.391.0799
 Toll Free USA/Canada: 1.800.221.5497
 phifer.com • ISO Registered



© SheerWeave is a registered trademark of PHIFER INCORPORATED.
 TM TrackLess is trademark of PHIFER INCORPORATED.
 © GREENGUARD is a registered trademark of GREENGUARD Environmental Institute.
 © MICROBAN is a registered trademark of Microban Products Company.
 © PHIFER INCORPORATED V20 121720